

A dark blue background featuring a white wireframe architectural drawing of a city street with tall buildings on either side, receding into the distance.

# LOZAN GROUP

— COMPANY PROFILE —

[WWW.LUD.COM.EG](http://WWW.LUD.COM.EG)

# TABLE OF CONTENTS

---

## 1 ABOUT LUD.

Informations about the company and its business model.

## 2 VISION AND MISSION.

Our vision and mission and core values.

## 3 MESSAGE.

Chairman's message about our role in LUD and responsibilities towards our customers.

## 4 HISTORY.

Group's history, timeline and regional group companies in various sectors.

## 5 DEVELOPMENTS.

Regional Investments and Urban developments.

## 6 APEX DOWNTOWN.

About Apex Business Complex.

## 7 PARTNERSHIPS.

About our corporations and our partners in success.

IN WORDS

# ABOUT US

Driven by quality.. Expanding globally..

## ABOUT LUD

---

Lozan Urban Development was established in 1997, where it's journey was distinguished from beginning by permant leadership, and it continued to grow over years to become one of the most growing in the Middle East.







# HUGE INVESTMENTS

With an innovative business model.

## BUSINESS MODEL

---

Over the years, the company has undertaken the diagnosis of the best investment strategies until it reached its innovative business model, as it includes a group of companies with large investments in various sectors such as import and export ,shipping general contracting, general supplies, aluminum & landscape.



## VISION

---

To be one of the top mega developers in the middle east by having a huge land bank reflect our experience through the coming years.



## MISSION

---

Deliver developed sustainable communities to our residents, In addition to choosing the promising investment areas in line with the direction of the vision EGYPT 2030.

# core Values



## QUALITY

One of the most important features of LUD is its reliance on international quality standards since the start of the process of selecting unique practical architectural designs to reflect the solidity of the structure.



## INNOVATION

Innovation by looking to provide advanced buildings that keep pace with the developments and needs of the times and providing practical solutions by dividing the spaces to reach the lowest loading percentage while serving the needs of our customers.



## COMMITMENT

Commitment to provide the best investment value of international quality by working to create urban and economic communities and deliver them on time.



## CREDIBILITY

Credibility & honesty is the best policy to achieve the principle of trust between the company and the client in the field of real estate development by treating our clients as partners of success.



## CUSTOMER SATISFACTION

Our first and primary aim is to satisfy the desire of our customers by providing residential and investment units that enjoy a high level of luxury, quality of finishing & meticulous implementation.



# CHAIRMAN'S MESSAGE

---



**MR. ADEL ABDEL MONEM**

**CHAIRMAN**



*We believe that urban development is one of the most important foundations on which the economy of countries rests, and also plays an important role in shaping the life of the individual and controlling the quality of his lifestyle. Therefore, we give priority to every step in the development process from the beginning of the project until the final touches. We know that our responsibility to our customers is a long-term commitment. We strive to gain the trust of our customers by improving investment opportunities and providing a variety of services to suit the needs of each individual customer. Therefore, we are committed to keep customer service after sales our main focus.*

*Adel Abdel Monem*



# HISTORY



The beginning of our journey was in 1997 by establishing several companies in various sectors in Egypt and United Arab Emirates.

**1997**

The beginning of investment in the United Arab Emirates with 17 different compounds.

**2011**

The beginning in the Delta in with 15 projects commercial, residential and tourism.

**2016**

Heading towards the new administrative capital with 3 mixed use projects.

**2022**

Proudly announcing to start Apex Business Complex at Downtown New Capital.

VARIOUS INDUSTRIES

# OUR BRANCHES

experience growing over the years

---



## EGYPT

- LOZAN URBAN DEVELOPMENT.
- HYDRA REAL DEVELOPMENT.

## UAE

- ALSAHM ALAWL REAL ESTATE.
- ALSAHM ALAWL CARPENTRY.
- JENAN FOR LANDSCAPE.
- DESERT EAGLES CONSULTANCY.
- CHRISTIVAL HOME APPLIANCES.
- NAJMET ALSHARIF TRANSPORTATIONS.
- TRUST TOWER REAL ESTATE.
- BAWABET MASR SHIPPING.

# REGIONAL DEVELOPMENTS

DEVELOPING A SEVENTEEN RESIDENTIAL COMPOUNDS IN UAE

---

## RESIDENTIAL IN UAE

---

In 2007 in United Arab Emirates where it delivered seventeen compounds (villas) with integrated service that were established in the Emirates of ( Abu Dhabi, Mohammed Bin Zayed city ) and Khalifa Bin Zayed Alef City.

17

LIVABLE COMMUNITIES

---

# OUR PROJECTS

## IN UNITED ARAB EMIRATES

S.NO.	Project Name	Address	CITY
PROJECT LIST			
01	AL AMRI	ZONE 14 PLOT 78 AL YAQeen ST	MOHAMED BIN ZAYED CITY
02	ALOTAIBA 2	ZONE 2 PLOT 23 AL BASEETAH ST	MOHAMED BIN ZAYED CITY
03	AL GHANEM	ZONE 13 PLOT 113A AL GHARIF ST	MOHAMED BIN ZAYED CITY
04	AL MAZROUIE 1	SW15 PLOT 114 AL AKRAM ST	KHALIFA CITY A
05	AL MARIKHI 1	SE26 PLOT 93B AL GHAWASIQ ST	KHALIFA CITY A
06	AL JABERI	SE40 PLOT 9 AL HAAJ ST	KHALIFA CITY A
07	AL HARMOODI	SE41 PLOT 21A AL BAZ ST	KHALIFA CITY A
08	AL KHOORI 1	SE24 PLOT 14A AL DAHMAN ST	KHALIFA CITY A
09	AL KHOORI 2	SE26 PLOT 36 AL FIDDAH ST	KHALIFA CITY A
10	AL JUNAIBI	SE34 PLOT 49 AL TAHADDI ST	KHALIFA CITY A
11	AL MESSABI	SECTOR 23 PLOT 66 AL TARHEEB ST	SHAKBOUT CITY



# OUR PROJECTS

## IN UNITED ARAB EMIRATES

S.NO.	Project Name	Address	CITY
PROJECT LIST			
12	OSAMA	SECTOR MFW-22 PLOT 12 AL HASANAT ST	SHAKBOUT CITY
13	AL HAMMADI	SECTOR E48 PLOT 276 TASNEEM ST	AL BATEEN AIRPORT
14	ALOTAIBA 1	ZONE 2 PLOT 24 AL SHAGHAMEEM ST	MOHAMED BIN ZAYED CITY
15	AL MANSOORI 4	SECTOR 10 PLOT 15-17 AL SILSAL ST	SHAKBOUT CITY
16	AL ZAABI	SE24 PLOT 46 AL RABIT ST	KHALIFA CITY A
17	AL MANSOORI 3	SW4 PLOT 44 SOUGHAN ST	KHALIFA CITY A
18	AL MARIKHI 2	SE26 PLOT 93C AL GHAWASIQ ST	KHALIFA CITY A
19	AL MAZROUIE 3	SW11 PLOT 88 ZAKHIT ST	KHALIFA CITY A
20	DR. MAZEN	ZONE 33 PLOT 69 AL KASSAR ST	MOHAMED BIN ZAYED CITY
21	AL MANSOORI 2	ZONE 36 PLOT312 AL QOUT ST	MOHAMED BIN ZAYED CITY
22	AL MAZROUIE 2	ZONE 36 PLOT 220 AL RAYN ST	MOHAMED BIN ZAYED CITY



**UAE – Live Shot**





**UAE – Live Shot**



**UAE – Live Shot**





**UAE – Live Shot**



+15

PROJECTS IN EGYPT

---

## DEVELOPMENTS IN EGYPT

DIFFERENT DESTINATIONS..SAME SUCCESS..

---

## VARIOUS PROJECTS

---

Our vision headed towards egypt in 2011. the beginning was in the delta in the governorates of mansoura Ras El Bar,Baltim , and New Damietta. where more than 15 varied projects (residential, commercial, administrative, medical and tourism) have been established. as well as a number of other projects in partnership with major companies in the business and real estate development sector.

# OUR PROJECTS

## IN EGYPT

S.NO.	Project Name	Address	CITY
PROJECT LIST			
01	2 TOURISM TOWERS	SUNSET PROJECT, RAS AL BAR	DAMIETTA
02	5 TOURISM TOWERS	DELNA LAGOONS PROJECT	NEW MANSOURA
03	15 PROJECTS	RESIDENTIAL, COMMERCIAL & ADMIN	MANSOURA
04	ALSAHM AL AWAL	11 TYPICAL FLOORS TOWER	TALKHA
05	LOZAN TOWER	11 TYPICAL FLOORS TOWER	MANSOURA
06	DOLAZAR TOWER	11 TYPICAL FLOORS TOWER	MANSOURA
07	AL MASA	6 TYPICAL FLOORS	TALKHA
08	ALHARAMAIN	4 TYPICAL FLOORS	TALKHA
09	JUWAIRIA	4 TYPICAL FLOORS	TALKHA
10	ALREHAB	4 TYPICAL FLOORS	TALKHA
11	ALSAFA	2 TYPICAL FLOORS	TALKHA

# OUR PROJECTS

## IN EGYPT

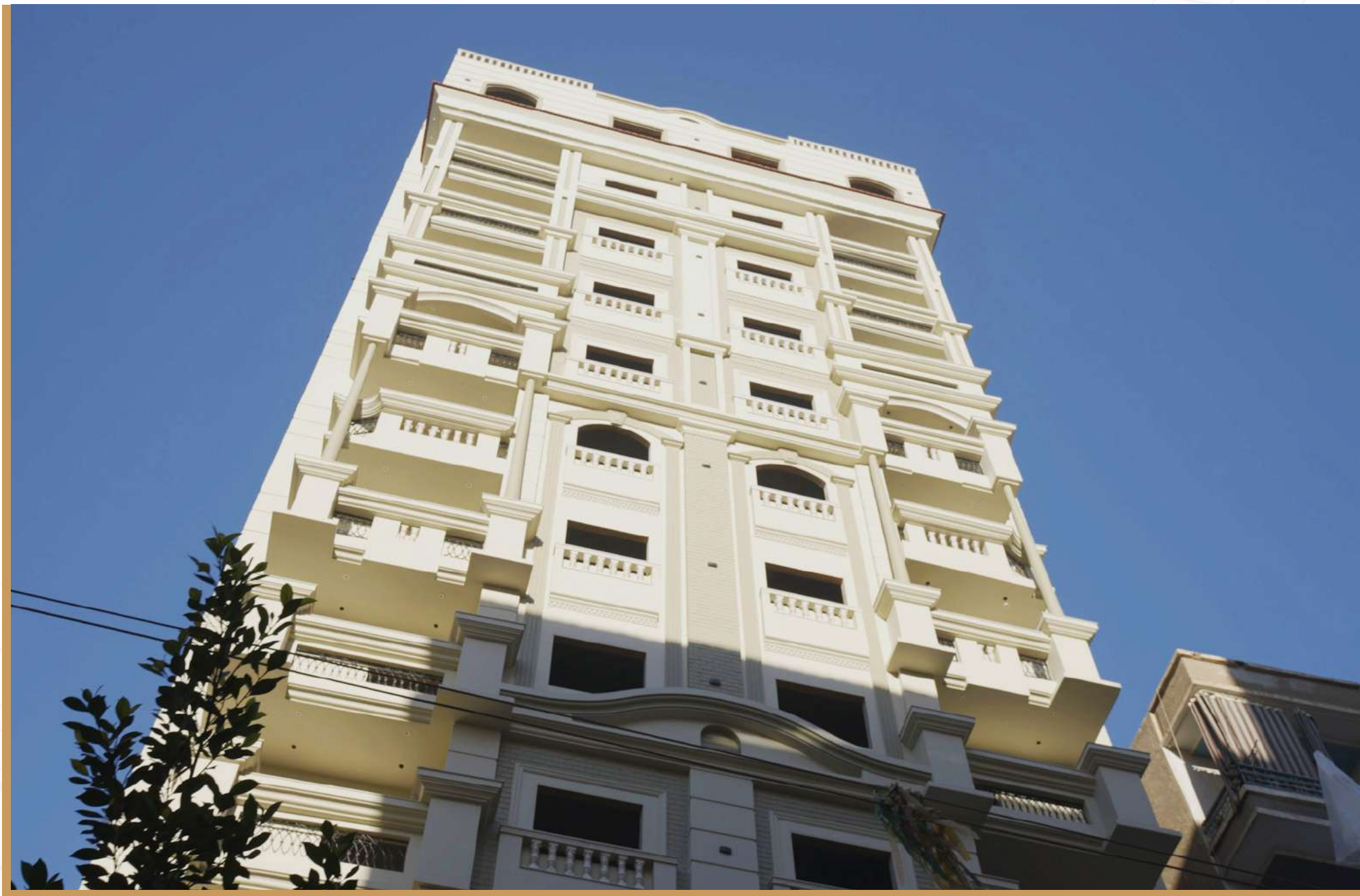
S.NO.	Project Name	Address	CITY
PROJECT LIST			
12	NILE BUILDING	2 TYPICAL FLOORS	TALKHA
13	ALNOKHBA BUILDING	2 TYPICAL FLOORS	TALKHA
14	ALSAFWA TOWER	RESIDENTIAL & COMMERCIAL - 11 FLOORS	TALKHA
15	ALSAHM	7 TYPICAL FLOORS TOWER	MANSOURA
16	ALFAYROUZ	10 TYPICAL FLOORS TOWER	MANSOURA
17	ALKAWTHAR	10 TYPICAL FLOORS TOWER	MANSOURA





**EGYPT – Live Shot**





**EGYPT – Live Shot**



**EGYPT – Live Shot**





**EGYPT – Live Shot**

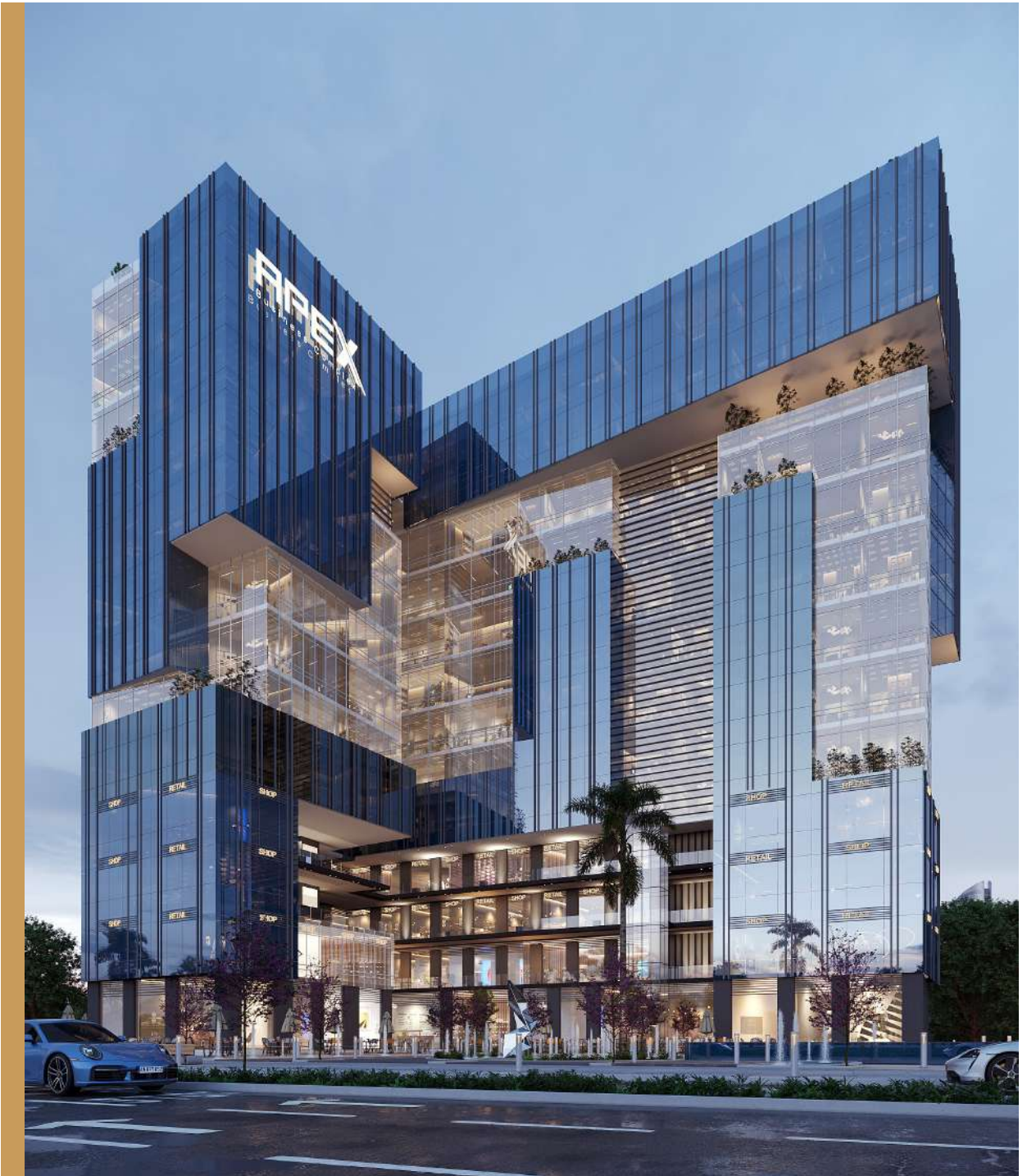


# Apex

## *Business Complex*

Apex business complex is an integrated business hub designed to be practical also unique looking which has the essential needs and a great work environment for a successful business.

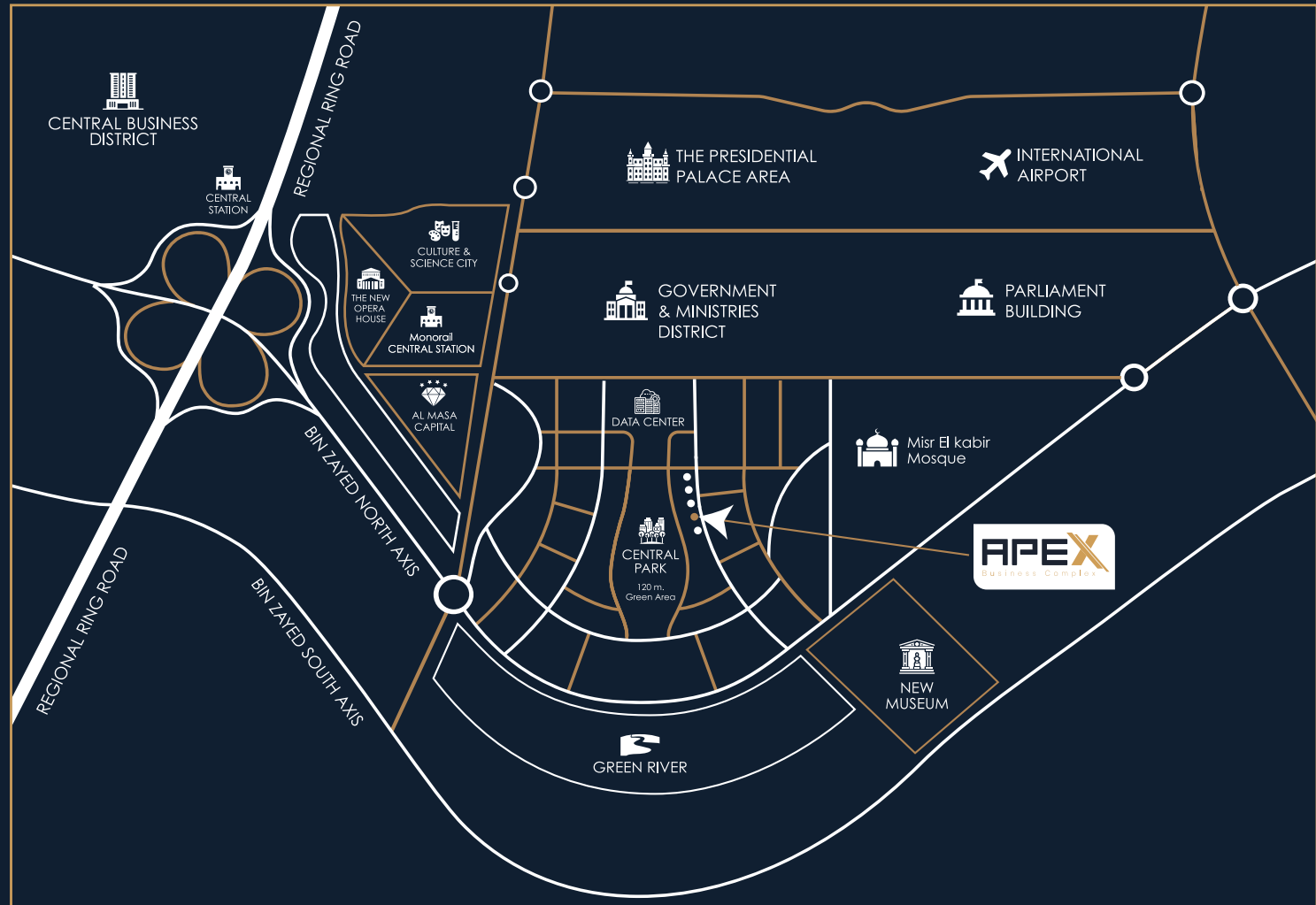
Apex business complex has a strategic location, nestled on the middle of Downtown district a few minutes away from New Capital's landmarks (Governmental District, Ministries District, Data Center, Opera House, Monorail Station, Masa Hotel and Tourist Towers) that makes it easy to reach from anywhere you come.



# APEX LOCATION

Apex has a special location in downtown, couple of minutes away from the governmental district, easy to reach it from anywhere you come.

Downtown will include shopping centers and major commercial activities in various fields in the heart of the New Capital, you can say it's an integrated work environment that make you begin your successful business journey.



*Nearby  
Landmarks*

- 01 Governmental District.
- 01 Ministries District.
- 01 Monorail Station.
- 01 Almasa Hotel.

# APEX Facilities

Downtown will include shopping centers and major commercial activities in various fields in the heart of the New Capital, you can say it's an integrated work environment that make you begin your successful business journey.

01 Separate entrances.

02 Flexible spaces modules.

03 Roof Garden.

04 Sky Lounge.

05 Underground Parking.

06 Energy saving environment.

07 Landscape Overlooking.

08 Apex's Grand Plaza.

09 Common Services

10 Panoramic Elevators.

11 Open Terraces.

12 Double Food Court.

13 Digital Screens.

14 Sharing meeting rooms.

15 Water Falls.

16 Common waiting areas.

# *Our* Partners





# LOZAN URBAN DEVELOPMENT

*15 years of success..*

*Scan me..*



 B9 ,3A ARABELLA PLAZA, NEW CAIRO, CAIRO, EGYPT

 19153      LUD.EGY  HELLO@LUD.COM.EG